



Lyrebird Park

WHO ARE WE?



The Williams Family

Lyrebird Park Camp is located in Yellingbo in the Yarra Ranges Valley, on 52 acres of beautiful and breathtaking undulating natural bushland, all just one hour's drive South east from Melbourne's CBD.

We have the perfect environment for spiritual and physical refreshment, inspiration, motivation and adventure challenges. It has a combination of both indoor and outdoor spaces for year round, all weather capability.

With over 25 years of experience, we pride ourselves on making it easy for camp co-ordinators and organisers to create a successful camp, by providing a truly unique facility amongst a tranquil bushland.

Stay with us and Experience the Adventure!

Light Forest

Pasture

Light Forest

IN THIS AREA

-  High Activities
-  Low/Trust Activities
-  Flying Fox
-  Bush huts
-  Bushwalks



CAMP OVERVIEW

- Up to 10 Breakout Halls/Rooms
- 123 beds across 5 Cabins and 8 Lodge Rooms, each with climate control systems and ensuites.
- Indoor and Outdoor Areas for general activities and sports
- Bushwalking tracks.
- Low and High Ropes including a 120m Flying Fox and Indoor Rock Climbing.

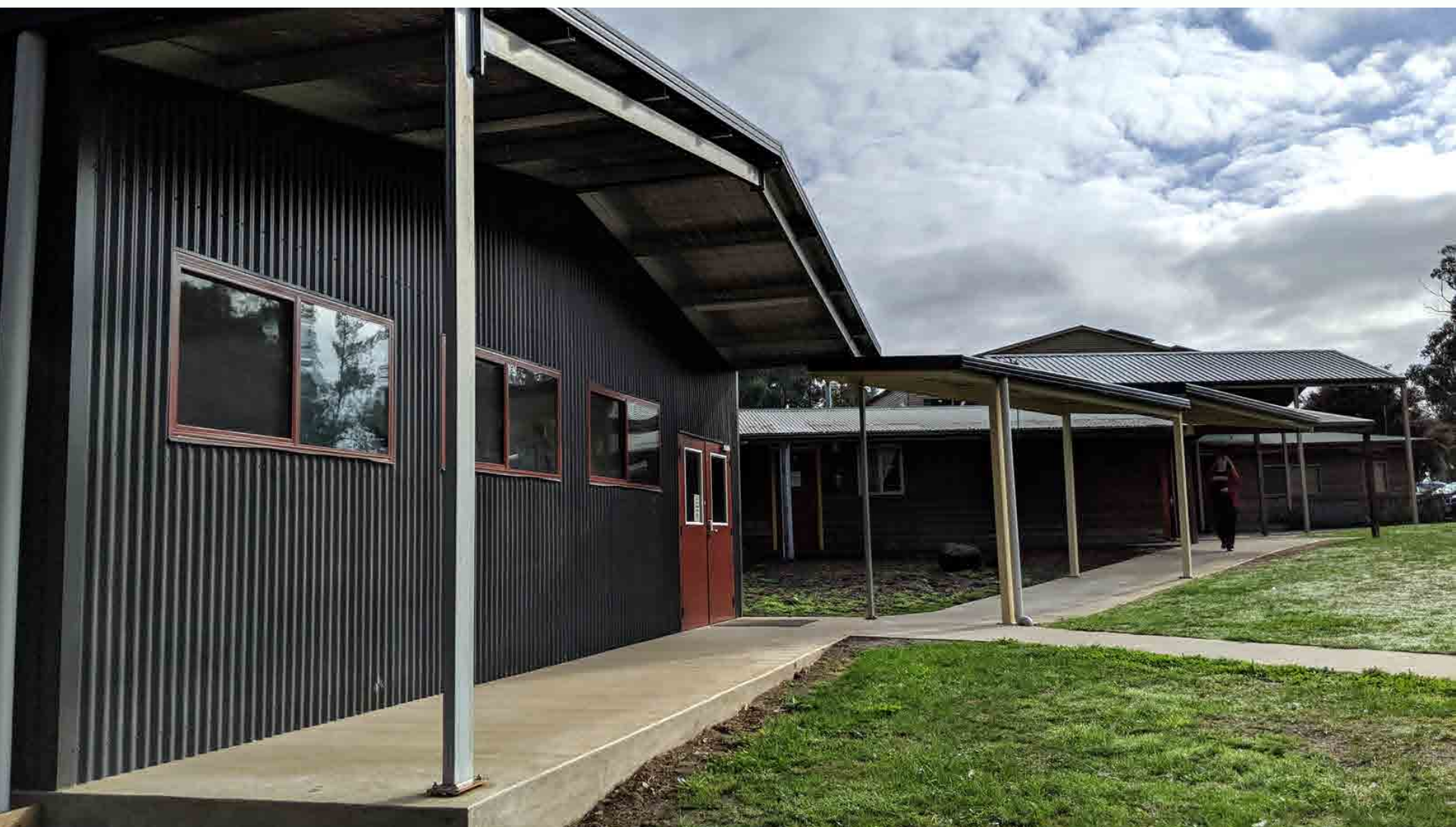
OUR FACILITIES

LARGE SPACIOUS HALLS AND
OUTDOOR SPACES



COMFORTABLE SPACES

You will find each of our main breakout halls are fitted with multimedia systems for all your presentation needs, including climate control systems for year round comfort.



FLEXIBLE DESIGN

Our flexible setup allows all our spaces to be converted to meet your needs - from indoor activity stations, large group meetings and for training facilities.

OUR MULTIPURPOSE SPACES



MAIN DINING HALL

20m x 12m

Large open plan hall with a projector and large movie screen.

Seats up to 150 people



RECREATION HALL

15m x 30m

Large space for more active activities.

Seats up to 200 people.



GREY HALL

13m x 10m

Convertible games hall with table tennis, foosball table and a pool table.

OUR MULTIPURPOSE SPACES



RED ROOM

8m x 4m

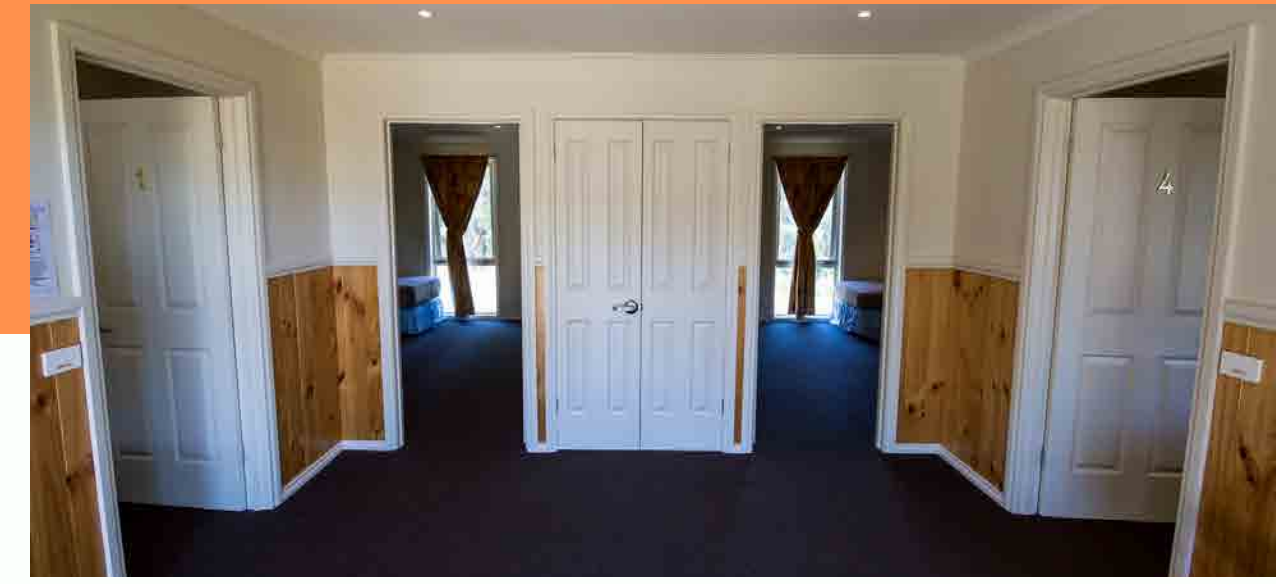
Located within the Main Hall and a great working space for admin or small sessions.



GREEN ROOM

9m x 6m

Comfortable meeting room for small breakout sessions with chairs and tables available.



CABIN FOYERS

4m x 4m

Spacious foyer area for small study or breakout sessions.



EXAMPLES OF ROOM USAGE

SACRED HEART COLLEGE - GEELONG

Thank you so much to Lyrebird Park for hosting our Year 12 Retreat Program. Your hospitality was amazing. The venue was beautiful, the rooms comfortable and very clean. Our students can't stop talking about the food and you made us feel so welcome! Wonderful facilities in a wonderful location with wonderful hosts. We look forward to our next visit!

CHRISTINA SYMONS

Catholic Identity and Mission Integration Leader

OUR ACCOMMODATION

HIGH QUALITY CABINS AND LODGES WITH
THE COMFORTS OF HOME IN THE BUSH



OUR CABINS



All the comforts of home in the bush

QUALITY

Each of our 5 cabins have 4 ensuited rooms, with climate control systems for year round comfort.

RELAXING

There are a total of 10 single beds and 4 double beds.

COMFORTABLE

Groups are required to bring their own linen and personal items. We offer a full linen hire service for an additional charge.

OUR LODGES



Shared comfortable spaces

COSY

8 rooms ranging in sizes from 1 - 16 beds, conveniently located to the Main Hall with undercover walkways.

SPACIOUS

Each room is ensuited with climate control systems.

CLEAN

All amenities are maintained with the highest of cleanliness standards for your comfort.

ST JOHNS REGIONAL COLLEGE

I have attended several school camps but the accommodation has never matched the facilities at Lyrebird Park. The venue provides several great working areas and students were able to enjoy the new recreation hall where they could play pool, table tennis and listen to music. The camp staff are always friendly and willing to help us out if we need anything. I would certainly recommend Lyrebird Park.

JUDY BISHOP - YEAR LEVEL COORDINATOR



OUR ACTIVITIES

CHALLENGING FUN



We offer a range of facilitated activities by our team, that can be tailored to work with your own program and your budget.

We can design a program with activity stations just for fun or develop an ABEL Program, which consists of sequenced stations to achieve desired learning/training outcomes.

All our activities require adult supervision throughout your stay.



ACTIVITIES

- Archery
- Bushwalks
- Campfire Pits
- Damper Cooking
- Flying Fox
- Initiative and Trust Activities
- Low Ropes
- Leap of Faith
- Night walks
- Rock Climbing
- Spider's Web
- The Plank (high rope activity)

...and more



PATTERSON RIVER SECONDARY SCHOOL

The Youth Crew is very much about identifying strengths and improving skills, focusing on building up a team of students who work together and support each other. The values and goals that you worked through with our groups were very relevant to our course and to the skills they will hopefully take with them in every day life. What an adventure and a sense of achievement and teamwork gained!

YOUTH CREW STAFF



OUR CATERING
DELICIOUS MEALS EVERYDAY

DELICIOUS AND FULLY CATERED

YOU WON'T GO HUNGRY

We have built a reputation for providing delicious meals across a variety of cuisines, ensuring dietary requirements are catered for as best as we can. The meals we provide are as important to us as they are to you. Meals available include hot breakfasts, morning tea, lunch, afternoon tea, dinner and even a light supper!

Please contact us to discuss our menu options





RELAX AND UNWIND

WITH ALL DAY BEVERAGES

Guests will be able to access an array of hot and cold beverages at their own convenience from our Main Hall throughout their stay. We include dishwashing services as part of your stay, with some groups required to provide duty groups.

THE SIR ZELMAN COWEN CENTRE

We returned to Lyrebird Park for the second year in a row for our leadership camp and we were not disappointed. Chen and Warren really do think of everything. The cabins are clean and comfortable, there are lots of break out spaces, the food is delicious (the unlimited hot chocolate is always a hit too!) and they anticipate all your needs and work with changes in your schedule. We couldn't recommend this venue more if you are looking for a place to run your next camp.

VICTORIA UNIVERSITY

HOUSE KEEPING

■ DUTY GROUPS

Our team will take care of the dishes, but we do require most groups to organise duty groups for meal times and cleaning up. This service is included for all corporate guests.

■ SUPERVISION

Children must be supervised by a responsible adult from the group at all times during their participation of any camp activity. This also includes participation in any Lyrebird Park facilitated activities and programs.

■ BYO

All groups must supply their own bed linen, towel, pillow, warm sleeping bag/doona and toiletries. We offer a full linen service at an additional charge.

■ PAYMENT

A minimum charge will apply, with further discounts applicable for larger groups. A deposit is also required to secure your booking.

CONTACT US



PLEASE CONTACT US FOR
A SITE VISIT OR TO
DISCUSS MORE OPTIONS

Warren & Chen Lu Williams

510 Beenak Rd, Yellingbo, VIC 3139

(03) 5964 8236

camps@lyrebirdpark.com.au